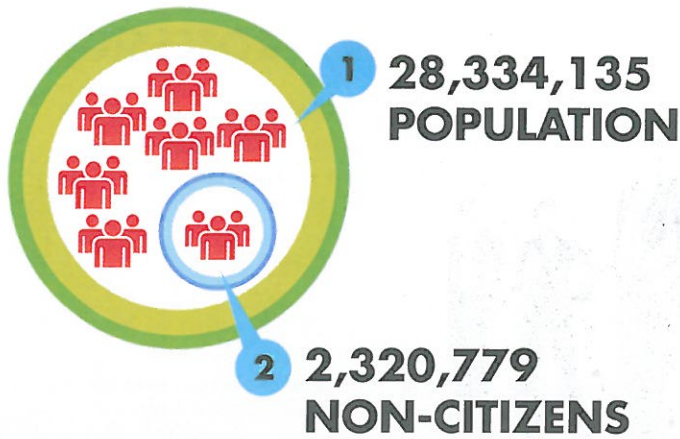


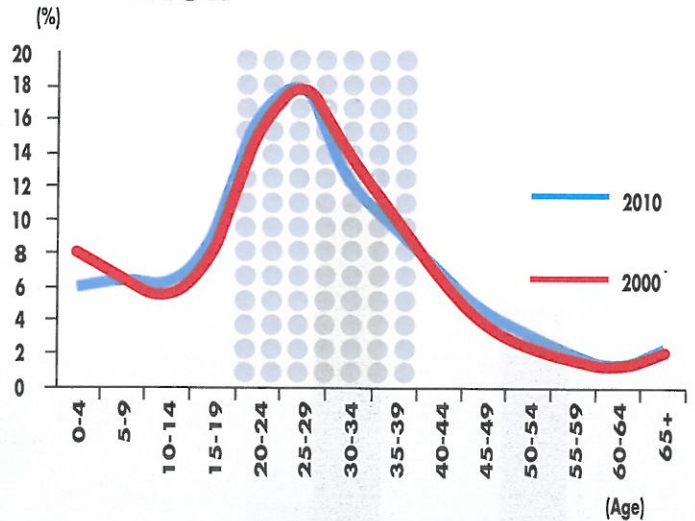
INTERNATIONAL MIGRATION IN MALAYSIA



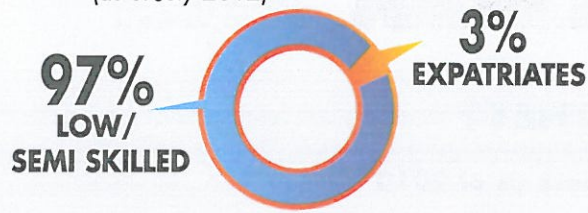
Source: Population Distribution and Basic Demographic Characteristics 2000, Department of Statistics Malaysia, 2001

Population Distribution and Basic Demographic Characteristics 2010, Department of Statistics Malaysia, 2010

3 MAJORITY ARE IN PRIME WORKING AGE



4 1.6 MILLION ARE FOREIGN WORKERS (as of July 2012)



Source : Economic Report 2012/2013, Ministry of Finance

5 REMITTANCE - SENDING COUNTRIES

In 2009, Malaysia was ranked 11th among top 30 remittance - sending countries.

Source : Migration and Remittances Factbook 2011, Second Edition, World Bank

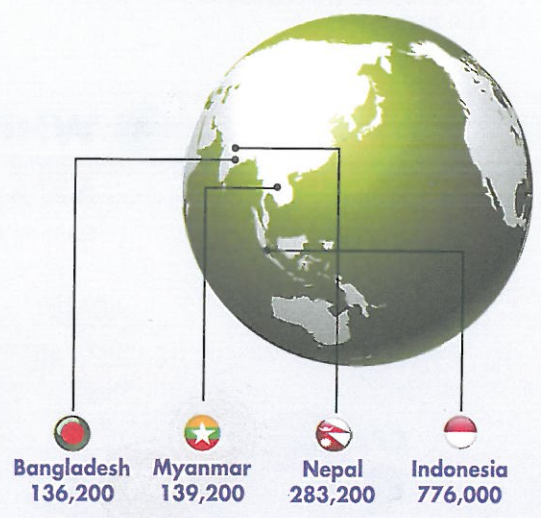
6 REMITTANCES

In 2012, migrants sent RM19.8 BILLIONS back to their home countries



Source: Financial Stability and Payment Systems Report 2012, Central Bank of Malaysia

7 MAJOR SENDING COUNTRIES



Source : Economic Report 2012/2013, Ministry of Finance

8 TOP DESTINATION COUNTRIES

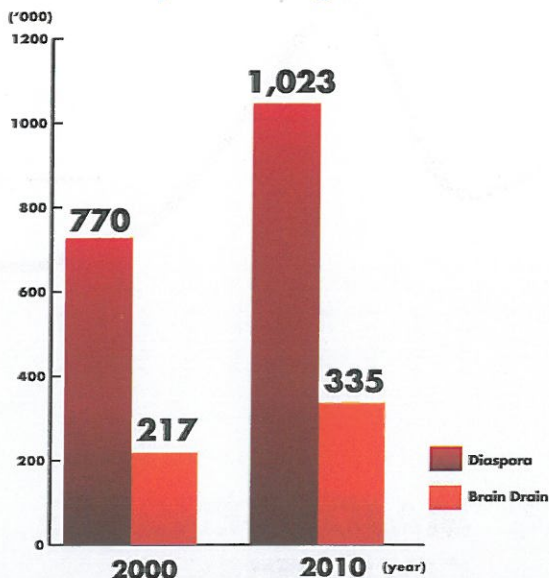
In 2010, Malaysia was ranked 20th among top 30 destination countries.

Source : Migration and Remittances Factbook 2011, Second Edition, World Bank

DIASPORA AND BRAIN DRAIN OF MALAYSIA

1 HOW MANY?

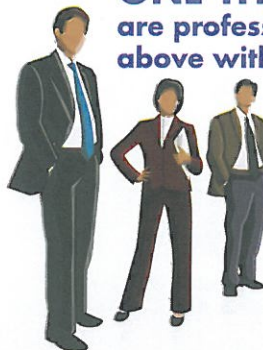
1 MILLION: Estimated number of Malaysians living abroad



Source: Malaysia Economic Monitor, April 2011, World Bank

2 HOW MANY ARE PROFESSIONALS?

ONE THIRD of Malaysian diaspora are professionals aged 25 years and above with tertiary education



Source: Malaysia Economic Monitor, April 2011, World Bank

3 WHAT IS THE REASON?

BETTER CAREER PROSPECTS listed as the main reason for Brain Drain

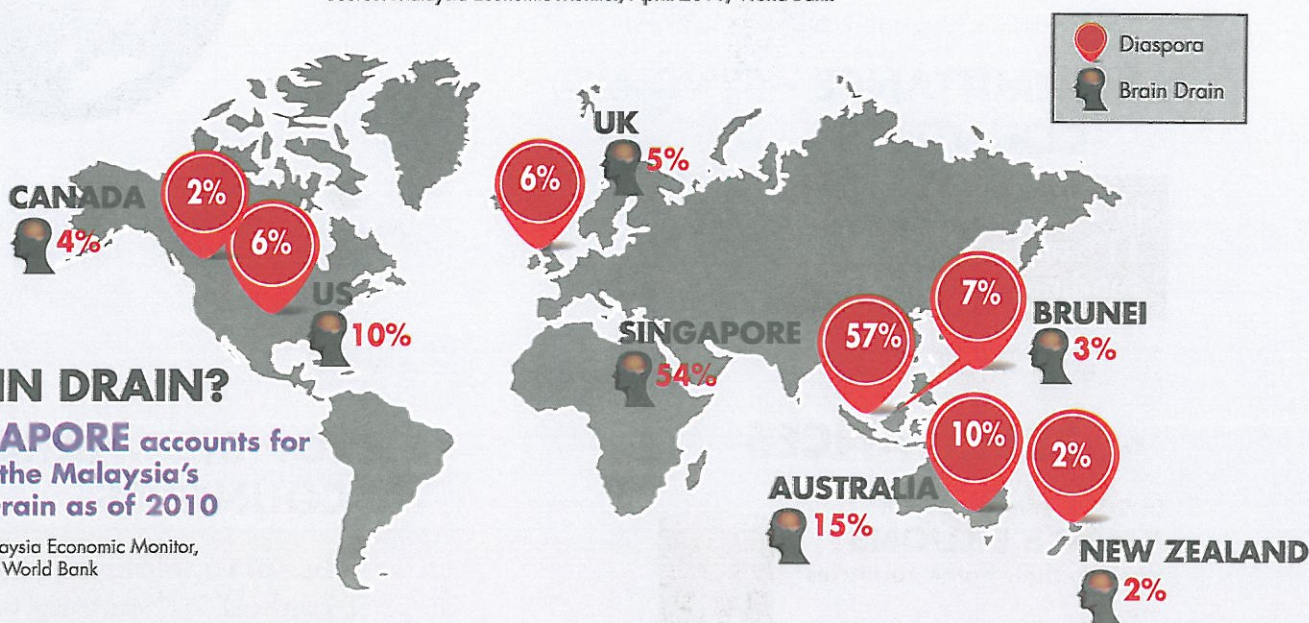


Source: Malaysia Economic Monitor, April 2011, World Bank

4 WHERE ARE THEY?

57% are in Singapore as of 2010

Source: Malaysia Economic Monitor, April 2011, World Bank



5 BRAIN DRAIN?

SINGAPORE accounts for half of the Malaysia's Brain Drain as of 2010

Source: Malaysia Economic Monitor, April 2011, World Bank

For more information, please contact us:
National Population and Family Development Board
Ministry of Women, Family and Community Development, Malaysia

12B, Bangunan LPPKN, Jalan Raja Laut,
 P.O. Box 10416, 50712 Kuala Lumpur

Tel : 03-26937555 Fax : 03-26988185

Email: popdata@lppkn.gov.my Twitter: @lppkn_pop Website: www.lppkn.gov.my

