

# CERVICAL CANCER AWARENESS MONTH 2025: INSIGHTS FROM MALAYSIAN WOMEN

#CepatTahuCepatTindak

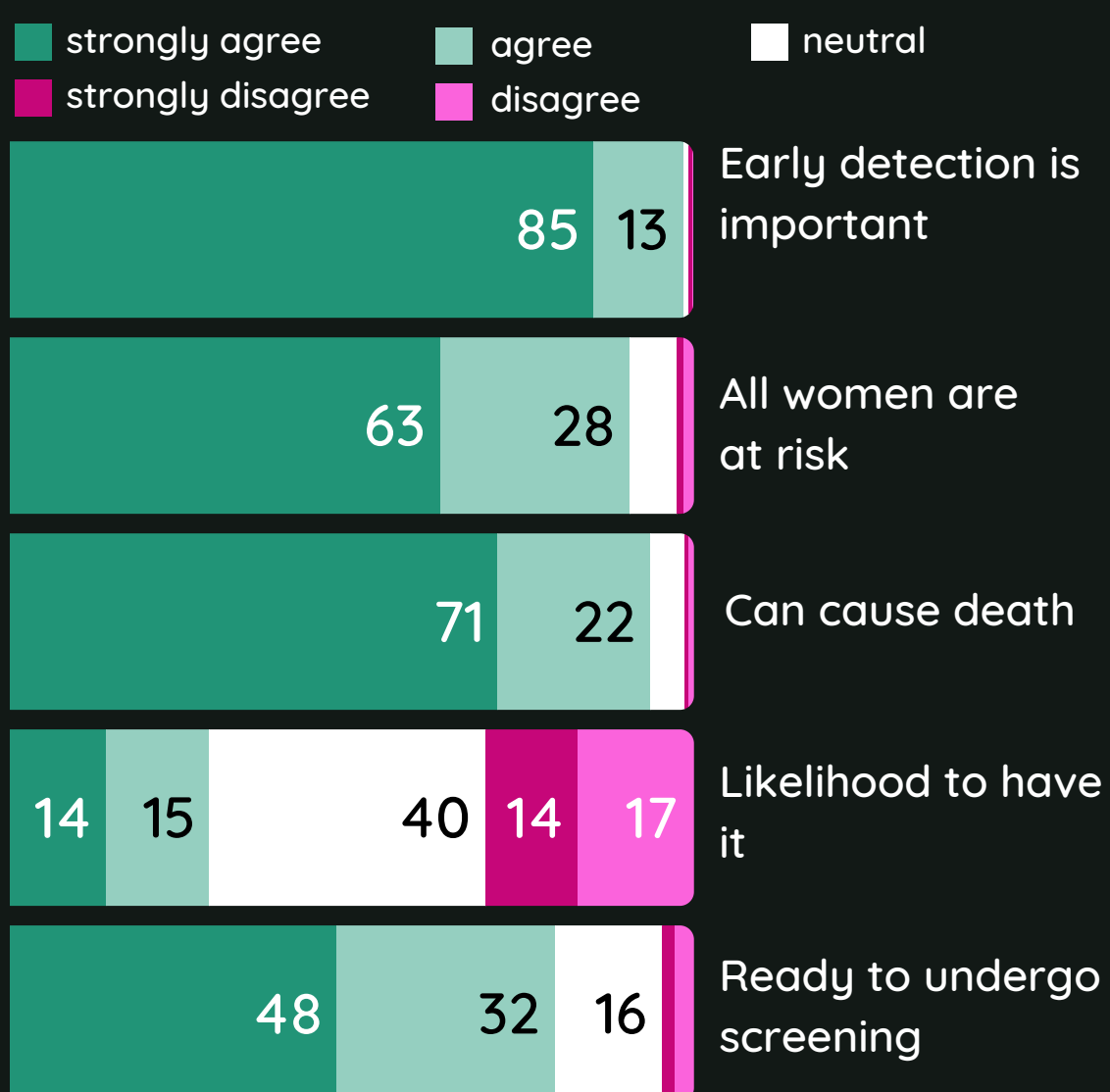


According to the Malaysia National Cancer Registry Report 2017-2021, cervical cancer is the sixth most common cancer among women in Malaysia. However, about 60% of women in Malaysia have never undergone cervical cancer screening based on National Health & Morbidity Survey, 2019.

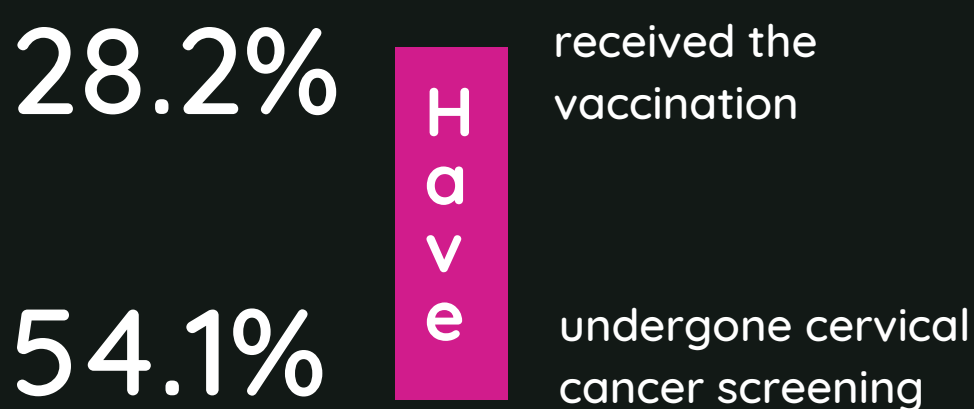
In conjunction with the 2025 Cervical Cancer Awareness Month, the Ministry of Women, Family and Community Development (KPWKM), through the National Population and Family Development Board (LPPKN), conducted an online public opinion survey to assess the knowledge, attitudes, and practices (KAP) of women in Malaysia regarding cervical cancer. The survey was carried out from 23 January to 17 February 2025. A total of 3,050 respondents, Malaysian women aged 18 and above, participated in the survey.

## Attitudes towards cervical cancer

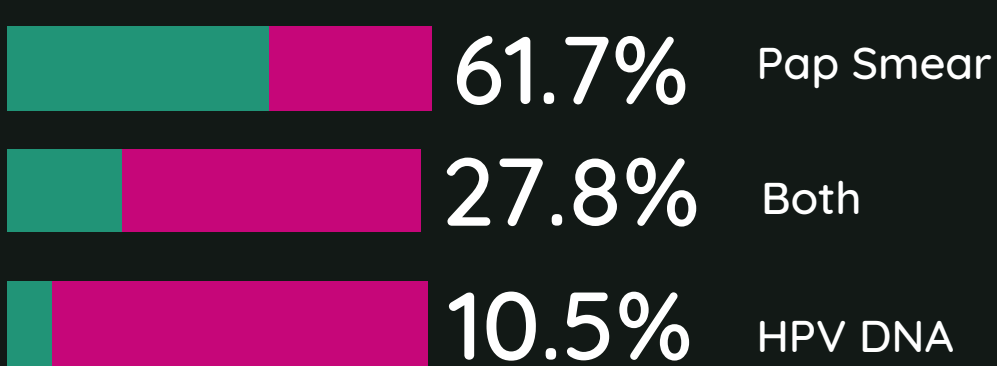
% to what extent women agree that...



## Practices related to cervical cancer



Types of screening methods used for cervical cancer examination



## Knowledge about cervical cancer

**77.6%** Unaware that HPV DNA cervical screening test should be conducted **once every 5 years**

**59.4%** Aware risk factors can lead to cervical cancer

**56.4%** Unaware of how to prevent cervical cancer

**23.8%** stating that there is **No Necessity** to undergo cervical cancer screening

**46.1%** Unaware that cervical cancer is caused by a **VIRUS**

**95.7%** Knew that cervical cancer can be detected and prevented through early screening

**34.3%** Unaware symptoms that a woman may have cervical cancer

**37.6%** Unaware that cervical cancer can be treated through **surgery, chemotherapy and radiotherapy**

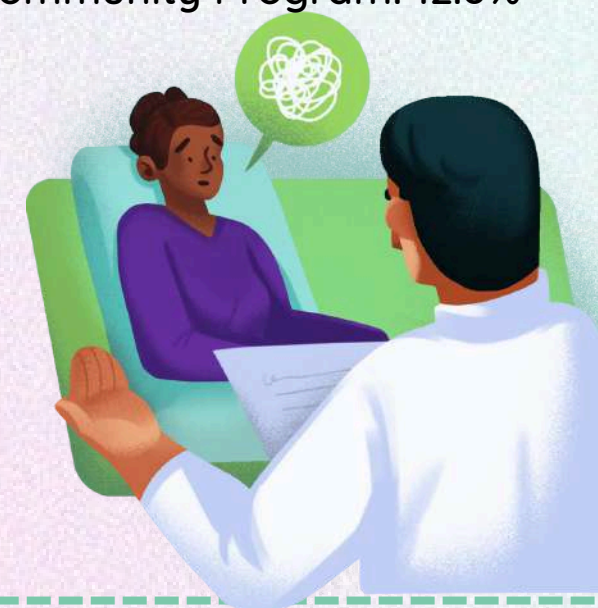
## Locations for Cervical Cancer Screening

### Pap Smear Test

Government Hospital/Clinic: 71.0%  
Private Hospital/Clinic: 22.8%  
LPPKN: 24.6%  
Community Program: 9.3%

### HPV DNA Test

Government Hospital/Clinic: 53.1%  
Private Hospital/Clinic: 14.1%  
LPPKN: 43.3%  
Community Program: 12.8%



For further information:  
POPULATION AND FAMILY RESEARCH DIVISION  
NATIONAL POPULATION AND FAMILY DEVELOPMENT BOARD  
Ministry of Women, Family and Community Development

Publication: February 2025

<https://mprh.lppkn.gov.my>



[www.lppkn.gov.my](http://www.lppkn.gov.my)

